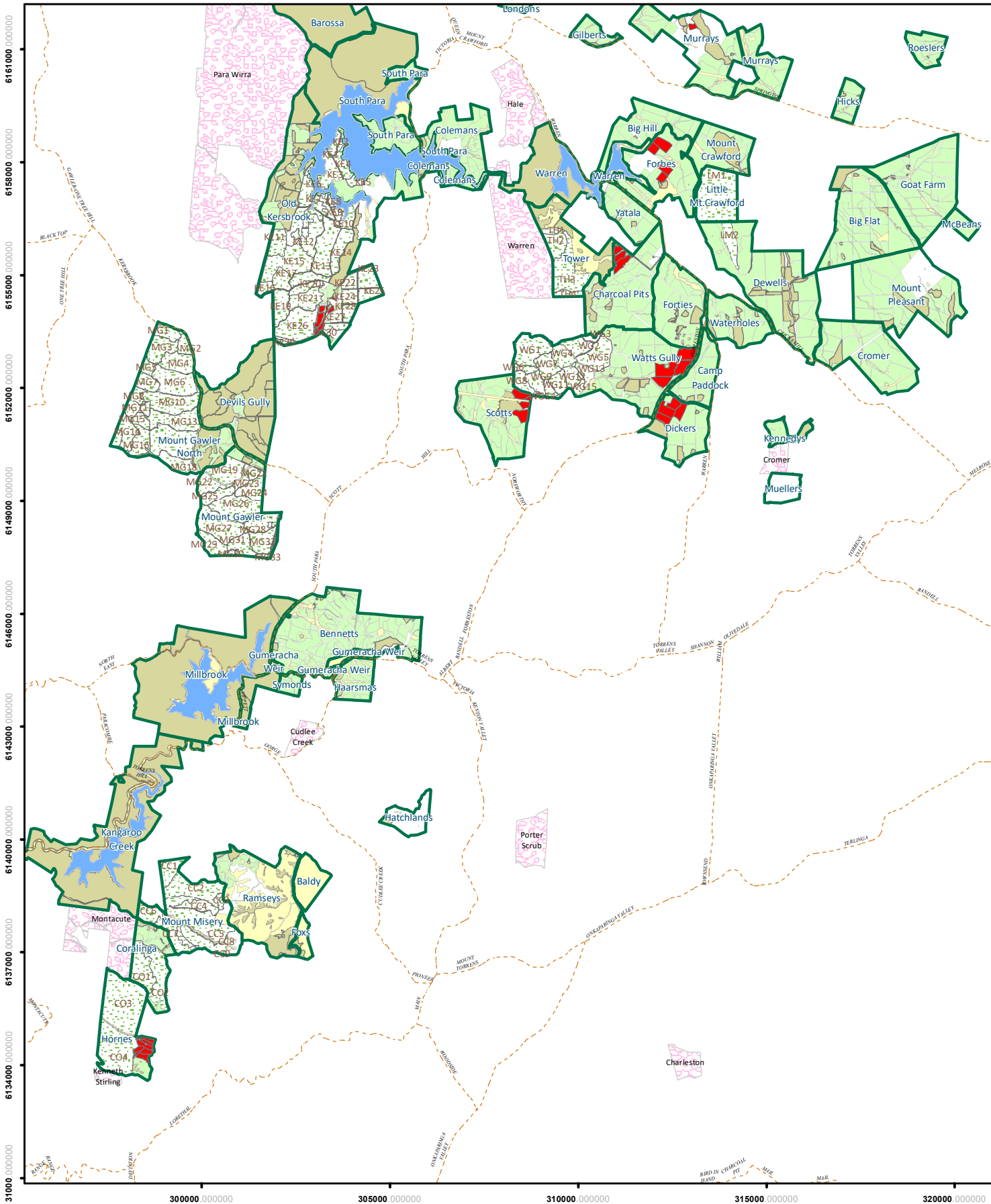
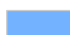
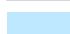





MOUNT CRAWFORD FOREST RESERVE


Planned Forest Operations Autumn 2025

Herbicide Application - Aerial Helicopter



-  Reservoir
-  SA Water
-  Main Roads
-  Forest Reserves/Locality Names
-  National Parks

Planned Forest Operations

 PL Comp. Control - Herb. (Est) selection

3.5 1.75 0 3.5 Km



Disclaimer: This document was produced by or on behalf of the Government of South Australia. The Government of South Australia gives no warranty and makes no representation, express or implied, as to the accuracy of the information contained within this document or the suitability of the information for any purpose. Any use of the information contained in this document (whether authorised or not) is at the sole risk of the user and the Government of South Australia disclaims responsibility for any loss or damage incurred as a result of such use. The information is provided solely on the basis that users of the information will make their own assessment as to the accuracy of the information and users are advised to verify all information contained within this document.